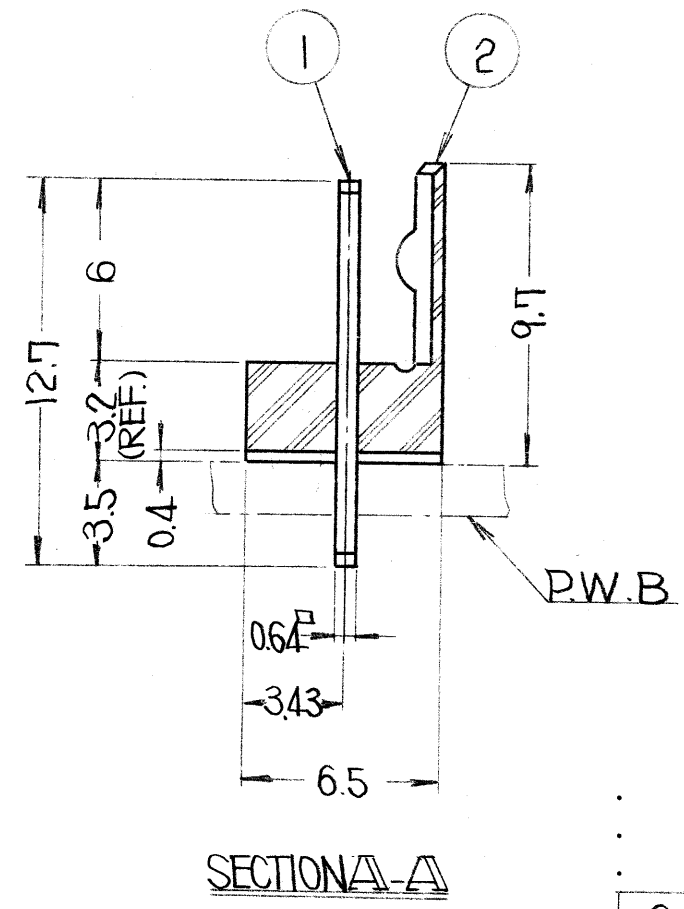
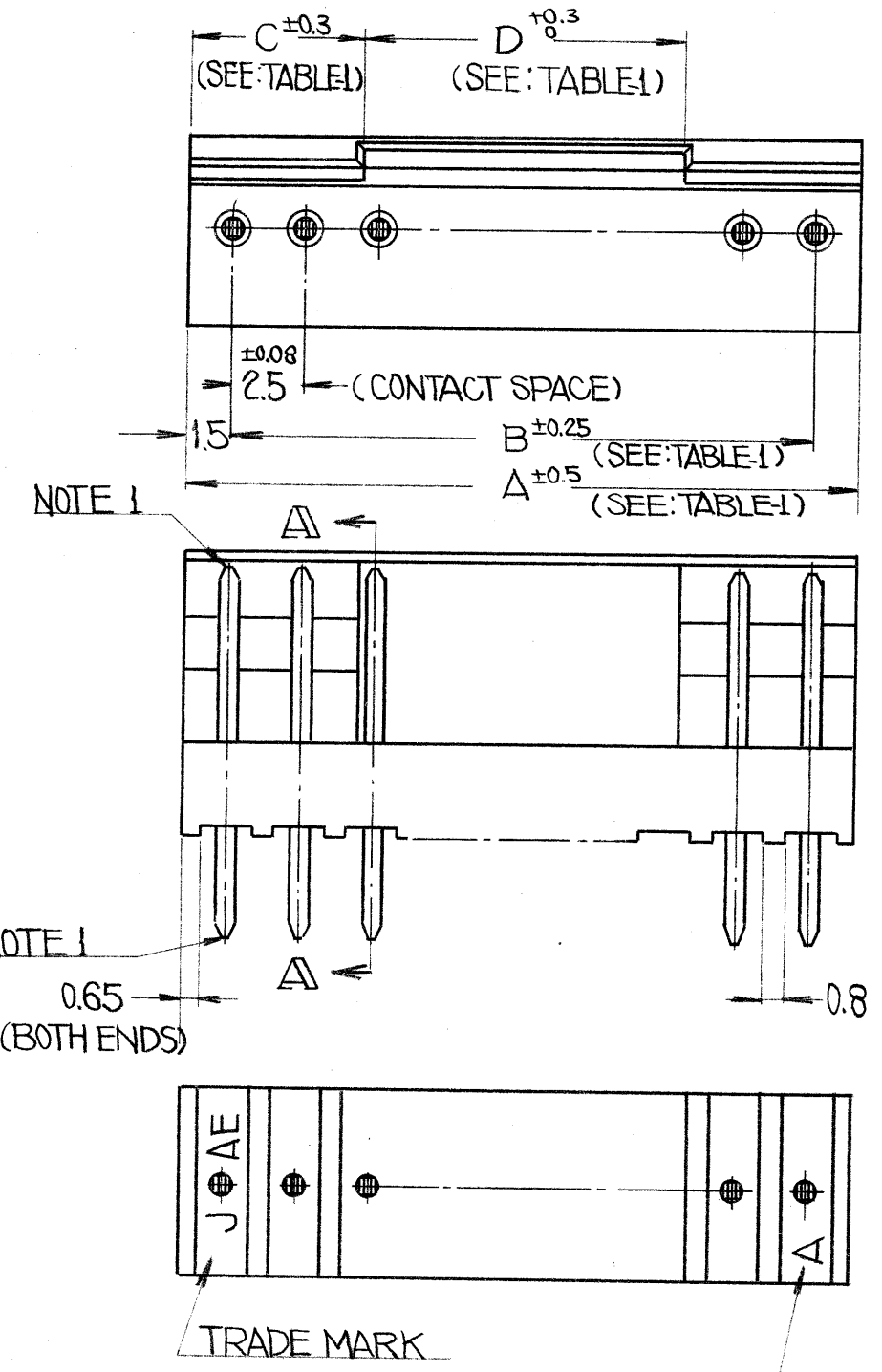


TABLE-1

NO. OF CONTACTS	DIM.	A±0.5	B±0.25	C±0.3	D+0.3
2		5.5	2.5	2	1.5
3		8	5	3	2
4		10.5	7.5	4	2.5
5		13	10	5	3
6		15.5	12.5	6	3.5
7		18	15	6	6
8		20.5	17.5	6	8.5
9		23	20	6	11
10		25.5	22.5	6	13.5



HOW TO ORDER

IL-\*\*\*P-S3EN2-\*(N)  
 NEW TYPE (5-CONTACT ONLY)  
 INSULATOR COLOR (STANDARD COLOR; LIGHT BROWN ISN'T SHOWN)  
 THICKNESS OF APPLICABLE P.C BOARD (2:1.6~2.4 THICK)  
 INSULATOR TYPE  
 CONTACT TYPE  
 CONTACT SPACING (25mm ONLY)  
 CONTACT ROW (SINGLE ONLY)  
 POST SIDE  
 NO. OF CONTACTS (SEE TABLE 1)  
 SERIES PREFIX

2	INSULATOR	1	THERMOPLASTIC		
1	CONTACT	SEE: TABLE-1	COPPER ALLOY	TIN OVER NICKEL	
ITEM	DESCRIPTION	Q'TY	MATERIAL	FINISH	PART NO.

NOTE 1. NO PLATING ON THESE AREAS.

NEXT ASS'Y	USED ON	NEXT ASS'Y	FINAL ASS'Y
APPLICATION		QT'Y	REQ'D

UNLESS OTHERWISE SPECIFIED  
 DIMENSIONS ARE IN MILLIMETERS  
 TOLERANCES ON:  
 FRACTIONS | DECIMALS | ANGLES  
 ±0.8 | ±0.5 | ±0.2

DATE: DEC. 1977  
 DRAWN: E. MURANO  
 CHECKED: T. Takeda  
 APP'D: T. SOMBI  
 APP'D: Joe Sauter

TREATMENT OR FINISH

3rd Angle Drawing

TITLE: STRIGHT PIN HEADER  
 IL-\*\*\*P-S3EN2-\*

JAE-CONNECTOR.COM  
 JAPAN JAWA ION TELE ELECTRONICS  
 IND. CO., LTD.  
 Reference Only  
 FACTORY  
 NAKAGAMI-CHO, AKISHIMA -SHI  
 TOKYO. JAPAN

DWG. NO. SJ015093-E  
 SHEET 1 OF 1

SCALE: x 4  
 DWG. SIZE: B  
 WT.