



# Low Temperature Cofired Ceramic - BTLC Series

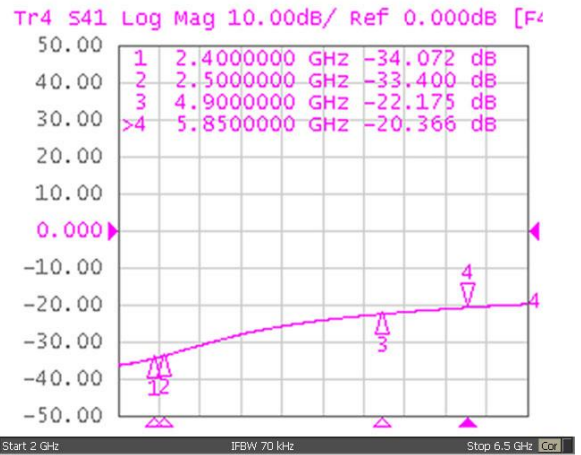
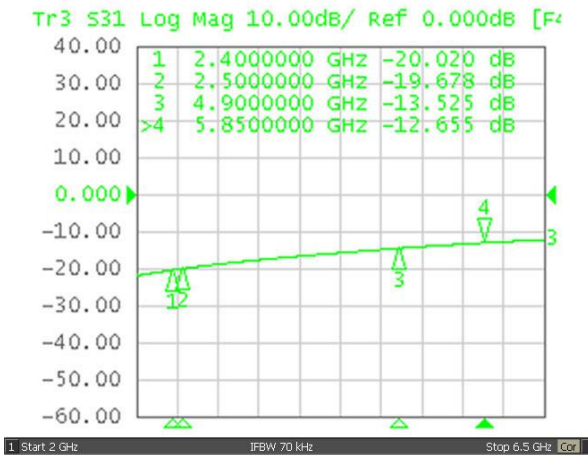
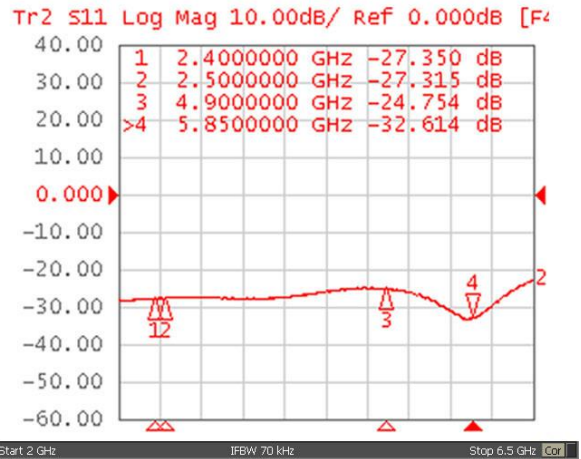
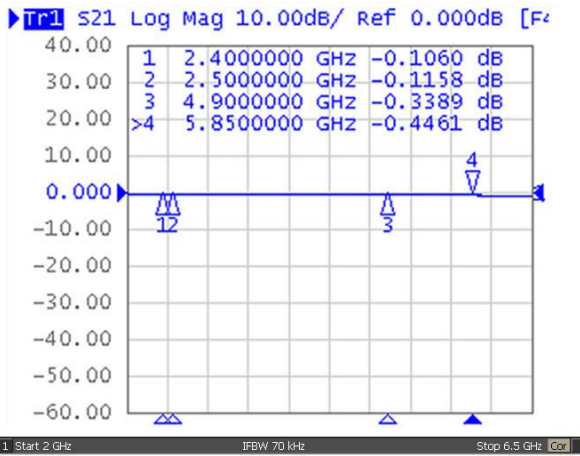
## Electrical Characteristics

Part Number	Pass Band (MHz)	Insertion Loss (dB)Max	Return Loss (dB)Min	Coupling	Isolation (dB)Min	Application
BTLC00060525GS1A10	2400~2500	0.25	17.69	19.0±1.5dB @ 2400~2500 MHz	20	WLAN/BT
	4900~5850	0.55		12.5±1.5dB @ 4900~5850 MHz		

- Operating temperature range  $-40^{\circ}\text{C} \sim 85^{\circ}\text{C}$

Test Instruments : Agilent E5071 Network Analyzer

### BTLC00060525GS1A10



# Low Temperature Cofired Ceramic - BTLC Series

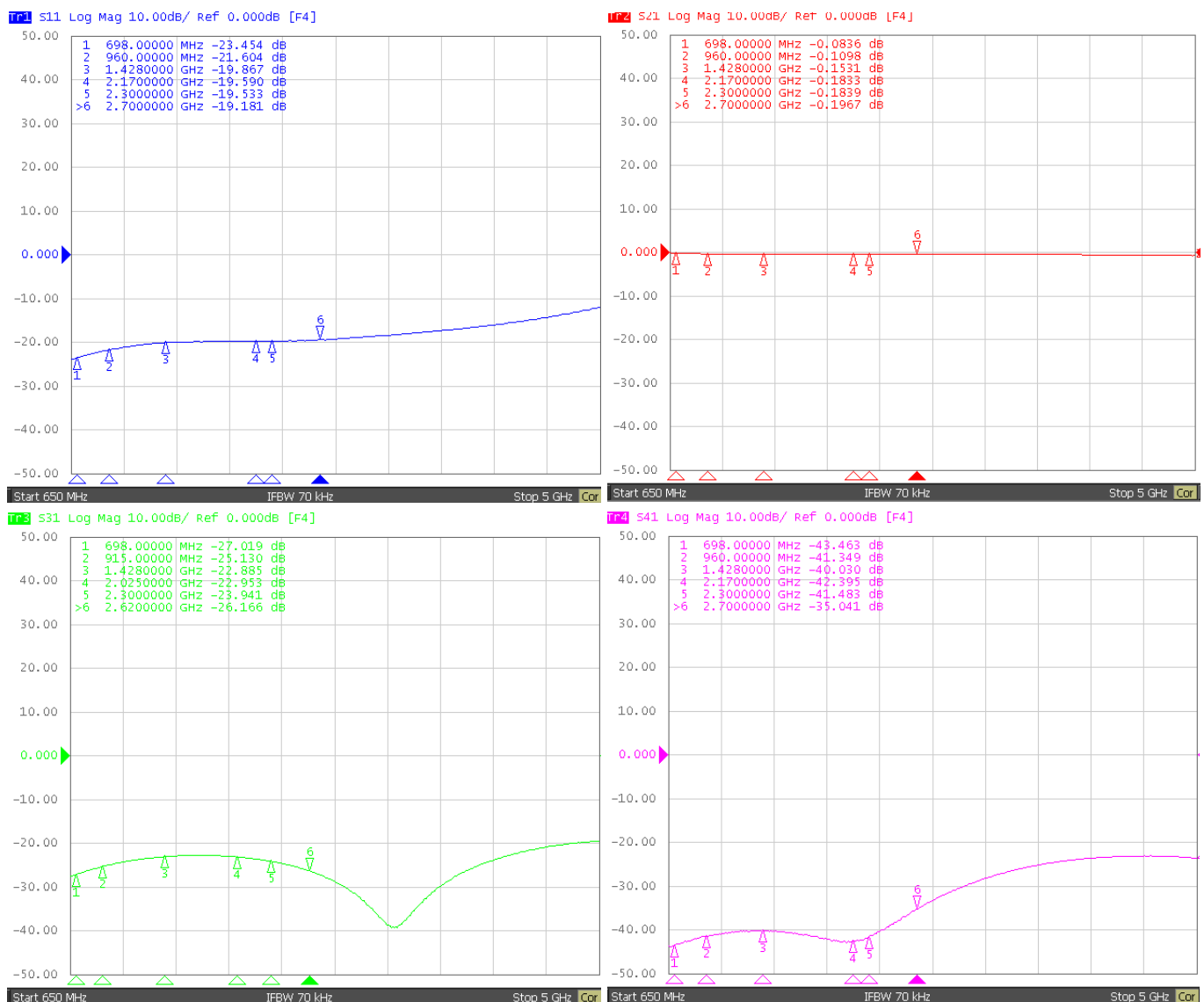
## Electrical Characteristics

Part Number	Pass Band (MHz)	Insertion Loss (dB)Max	Return Loss (dB)Min	Coupling	Isolation (dB)Min	Application
BTLC00160812GS1A80	698~960	0.15	13.98	26.8±1dB @ 698 MHz	40	LTE
	1428~2170	0.25		24.9±1dB @ 915 MHz		
	2300~2700	0.25		22.4±1dB @ 1428 MHz 22.0±1dB @ 2025 MHz 24.5±1dB @ 2300 MHz 26.8±1dB @ 2620 MHz		

- Operating temperature range -40°C ~ 85°C

## Test Instruments : Agilent E5071 Network Analyzer

### BTLC00160812GS1A80

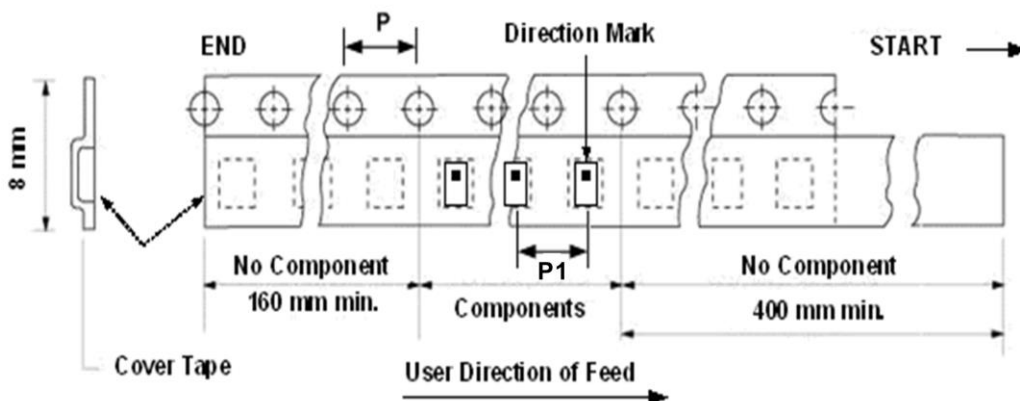


Please be sure to request approval specifications that provide further details of the products. Kindly note that the content of these specifications are subject to change or may be discontinued without prior notice. This product may not be designed/used in medical or high risk applications without Chilisin approval. Please contact our sales department before ordering.

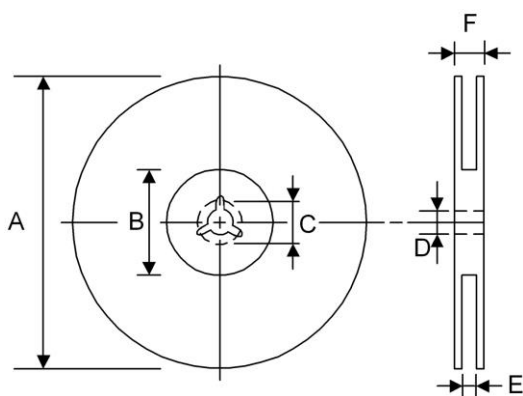
# Low Temperature Cofired Ceramic - BTLC Series

## Packaging Specifications

### Tape Dimensions



### Reel Dimensions



### Dimensions in mm

TYPE	Tape Dimensions		Reel Dimensions						Quantity PCS / REEL
	P	P1	A	B	C	D	E	F	
BTLC000605	4	2	178	60	-	13	9	12	10000
BTLC001608	4	4	178	60	-	13	9	12	4000