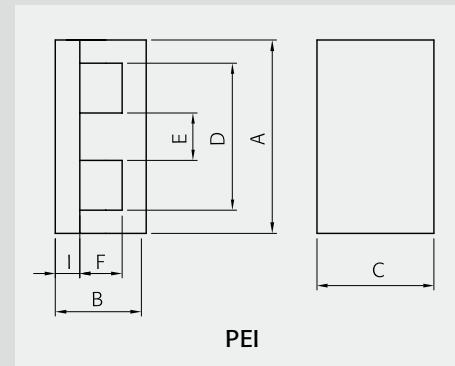
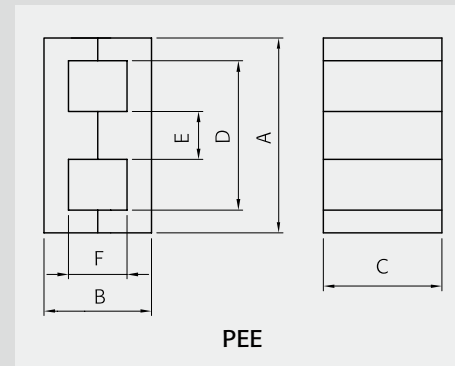
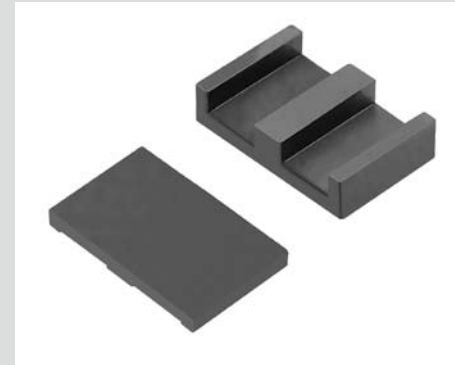


PLANER CORES

	PEE3817S	PEE4319S	PEE5821S	PEI1405S	PEI1806S	PEI2208S	PEI3210S	PEI3812S	PEI4314S
	PEE	PEE	PEE	PEI	PEI	PEI	PEI	PEI	PEI
A	38.10 ±0.76	43.20 ±0.90	58.40 ±1.20	14.00 ±0.30	18.00 ±0.35	21.80 ±0.40	31.75 ±0.64	38.10 ±0.75	43.20 ±0.90
B	16.52 ±0.26	19.00 ±0.26	21.00 ±0.26	5.00 ±0.15	6.00 ±0.20	8.20 ±0.15	9.53 ±0.26	12.07 ±0.25	13.60 ±0.25
C	25.40 ±0.50	27.90 ±0.60	38.10 ±0.80	5.00 ±0.10	10.00 ±0.20	15.80 ±0.30	20.32 ±0.40	25.40 ±0.51	27.90 ±0.60
D	30.23 min.	34.70 min.	50.00 min.	11.00 ±0.25	14.00 ±0.30	16.80 ±0.40	24.90 min.	30.23 min.	34.70 min.
E	7.60 ±0.20	8.10 ±0.20	8.10 ±0.20	3.00 ±0.10	4.00 ±0.10	5.00 ±0.10	6.35 ±0.13	7.60 ±0.20	8.10 ±0.20
F	8.90 ±0.26	10.80 ±0.26	13.00 ±0.26	2.00 ±0.10	2.00 ±0.10	3.20 ±0.10	3.18 ±0.20	4.45 ±0.10	5.40 ±0.13
I				1.50 ±0.05	2.00 ±0.10	2.50 ±0.05	3.18 ±0.13	3.80 ±0.10	4.10 ±0.13

C1(mm⁻¹)	0.272	0.276	0.268	1.16	0.514	0.332	0.278	0.226	0.226
Le(mm)	52.6	61.7	81.2	16.7	20.3	26.1	35.9	43.7	50.8
Ae(mm²)	194	225	305	14.5	39.5	78.5	129	194	225
Ve(mm³)	10200	13900	24600	240	800	2040	4560	8460	11500
Ac(mm²)	193	225	305	14.5	39.5	78.5	129	193	225
AW(mm²)	100.7	143.6	272.4	8	10	18.9	29.5	50.4	71.8
W(g/set)	52	71	124	1.1	4.3	11	21.7	43.3	59

Al value	PL-7	7800	7700	7900	1800	4100	6400	7600	9300	9300
	PL-9	9710	9630	10270	2110	5130	8000	9500	11630	11630
	PL-11	8110	8010	8220	1870	4260	6660	7900	9670	9670
	PL-13	10350	10270	10950	2250	5470	8530	10130	12400	12400
	PL-15	8110	8010	8220	1870	4260	6660	7900	9670	9670
	PL-F1	4530	4490	4790	990	2390	3730	4430	5430	5430
	PL-F2	3240	3210	3420	710	1710	2660	3160	3880	3880
Core loss	PL-7	5.61	7.65	13.53	0.13	0.44	1.12	2.51	4.65	6.33
	PL-9	5.10	6.95	12.30	0.12	0.40	1.02	2.28	4.23	5.75
	PL-11	5.10	6.95	12.30	0.12	0.40	1.02	2.28	4.23	5.75
	PL-13	4.90	6.67	11.81	0.12	0.38	0.98	2.19	4.06	5.52
	PL-15	4.59	6.26	11.07	0.11	0.36	0.92	2.05	3.81	5.18
	PL-F1	1.22	1.67	2.95	0.03	0.10	0.24	0.55	1.02	1.38



Part No.	PEI5815S	
Type	PEI	
Dimensions in mm	A	58.40 ±1.20
	B	14.60 ±0.26
	C	38.10 ±0.80
	D	50.00 min.
	E	8.10 ±0.20
	F	6.50 ±0.13
	I	4.10 ±0.13

Core Set Parameters	C1(mm⁻¹)	0.224
	Le(mm)	68.3
	Ae(mm²)	305
	Ve(mm³)	20800
	Ac(mm²)	305
	AW(mm²)	136.2
	W(g/set)	106

Electrical Characteristics ⁽¹⁾⁽²⁾	Al value	PL-7	9400
		PL-9	12290
		PL-11	9780
		PL-13	13100
		PL-15	9780
		PL-F1	5740
		PL-F2	4100
Core loss	PL-7	11.44	
	PL-9	10.40	
	PL-11	10.40	
	PL-13	9.98	
	PL-15	9.36	
	PL-F1	2.5	

Note : 1) Core loss
 - Unit : Watt max.
 - Measuring conditions
 PL-7, PL-11, PL-15 : 100kHz, 200mT, at 100°C
 PL-9, PL-13 : 100kHz, 200mT, at 80°C
 PL-F1 : 500kHz, 50mT, at 80°C

2) Al value
 - Unit : nH/N²
 - Measuring conditions : 1kHz, 0.1V, 23°C
 - Tolerance : ±25%